



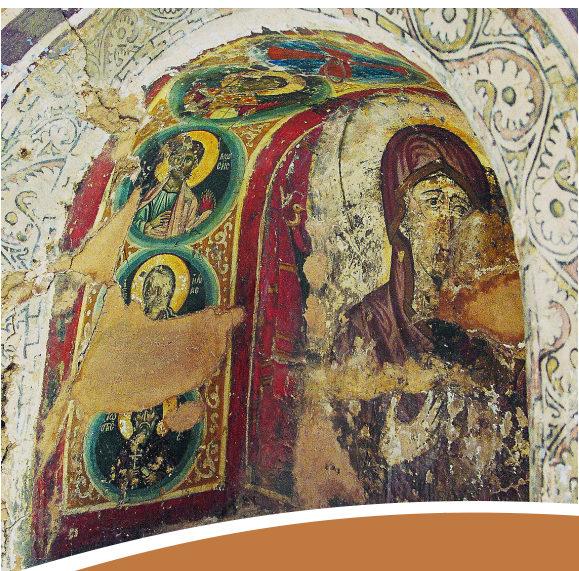
www.EO.travel/mytrip Tour = EG25 Date = 011425 Code = Z ID = 62057



Join Chris Osborne, Butler Springs Christian Camp
& Dr. Mark Ziese

Walking in the **Footsteps of Moses**

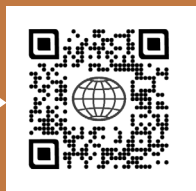
January 14 - 25, 2025

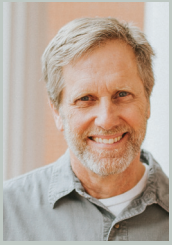


EO 
Educational Opportunities Tours

www.EO.travel
800-247-0017

Scan to
Travel with Us!





About Your Instructor... Mark Ziese, Ph.D.

Discovering the place where faith begins is a passion for Mark Ziese. This experiential quest is at the center of his work as a Field

Instructor with the Jerusalem Center of Biblical Studies, his archaeological excavations in the Middle East, and his regular engagement with college and seminary students.

Mark has been studying, speaking, and writing on matters related to the Bible and its world since 1984. He was named a Fellow at the Albright Institute of Archaeology in Jerusalem in 2011.

Learn more about Mark at his website at:
www.biblelandexplorer.com.



ITINERARY

January 14 – Depart the USA

Depart the USA on an overnight flight.

January 15 – Arrive in Cairo

Arrive in Cairo and be welcomed by your tour representative, who will help you obtain your entry visa. Transfer to your hotel (near the airport, most likely) for dinner and overnight.

January 16 – The Pyramids of Giza

After breakfast, visit the Pyramids of Giza, constructed over 1,000 years before the birth of Moses. See the Great Sphinx and have the opportunity to ride a camel in the desert near the Pyramids. See modern Cairo as you travel to your hotel on the Nile River for dinner. Visit the Egyptian Museum of Antiquities to view the unique collection of Pharaonic art and the renowned treasures of King Tutankhamun.

January 17 – Route of the Exodus

Travel east from Cairo and see the Suez Canal (photo stop) and remember the parting of the Red Sea (Spring of Moses stop) before crossing into the Sinai Peninsula. Stop at the oases on the route the Israelites followed on the Exodus before arriving at St. Catherine. Enjoy a Bedouin dinner in the desert this evening before overnighing in your desert accommodations (Bedouin Dinner Experience tonight).

January 18 – Mount Sinai

This morning, you can opt to climb Mount Sinai, where tradition says Moses received the Ten Commandments. This will be a very strenuous hike. You must be in very good shape, and there will be an early morning start for this option. Everyone will experience a visit to the fortified St. Catherine's Monastery, built in the 6th century, and one of the oldest working monasteries in the world with the world's oldest continually operating library. Both the Codex Sinaiticus and Syriac Sinaiticus, important early Biblical manuscripts, were discovered here. Even Muhammad found refuge here, and the site is sacred to all three monotheistic religions. Remember the story of Moses and the burning bush, which tradition places inside the monastery. Continue to Sharm El Sheikh for dinner and overnight at your hotel (a beautiful beach resort) located on the shores of the Red Sea.

January 19 – Day of Rest

Enjoy a day of rest at your Red Sea resort. Enjoy a relaxing day by the pool or optional activities like a glass-bottom boat ride over the stunning reef or other water activities. Lunch is on your own today. There will also be a snorkeling option and an ATV tour option through the desert with tea and coffee under the stars.

January 20 – Luxor & Karnak

This morning, fly from Sharm el Sheik to Luxor, ancient Thebes, which served as the Egyptian capital during the New Kingdom and the time of Moses. Visit the magnificent Temple of Luxor with its avenue of sphinx statues and mighty monumental columns. Continue to the Karnak Temple, which was built over 2,000 years ago and is the largest religious building ever constructed, and see the famed Hypostyle Hall, the Obelisks of Queen Hatshepsut and Tutomosis III, the temple of Amon, the Granite Scarabeus and the Sacred Lake. Board the Movenpick MS Sunray and enjoy dinner. Guests will go to Karnak Temple and then get checked in on the cruise ship. After some time to rest and eat lunch on board, the group will have the opportunity for a felucca ride in the evening and a carriage ride through old Luxor. After the carriage ride, guests will enjoy a nighttime visit to Luxor Temple. The ancient site lit up is quite spectacular. Guests will return to the ship for a late dinner. The ship overnights in Luxor.

January 21 – Valley of the Kings & Esna

This morning, enjoy the sunrise over the Nile River before you visit the Valley of the Kings. Tombs were constructed here for the kings and powerful nobles of Egypt for nearly 500 years. The valley stands on the west bank of the Nile, across from Thebes (modern Luxor), within the heart of the Theban Necropolis. See the Colossi of Memnon, made of sandstone from Gabal El Silselah. Each colossus, including the pedestal and the crown, is about 21 meters tall and represents King Amenhotep III. See the Temple of Queen Hatshepsut, one of only a handful of female rulers in Ancient Egypt. Her reign was the longest of all the female pharaohs. Sail to Esna, enjoying afternoon tea before visiting the Temple of Khnum. Dinner and overnight onboard.

January 22 – Edfu & Kom Ombo

Visit the Edfu Temple on the west bank of the Nile. Dating to the Ptolemaic period, the temple was dedicated to the worship of the god Horus, represented as a falcon. It is one of the most beautiful Egyptian temples, distinguished by its huge, splendid structure blending Pharaonic and Greek architecture. Sail to Kom Ombo to visit the Kom Ombo Temple. Built on a hillside, this temple was constructed in the Ptolemaic Roman era for the worship of the gods Haroeris and Sobek. It is noted for the relief engravings on its walls, which show ancient surgical tools, bone saws, and dentistry tools. Nearby, view the three mummified crocodiles in Hathor's chapel.

January 23 – Aswan

Set sail on a smaller boat across the Nile to visit the temples at Philae, including the Temple of Isis, one of the greatest Temples in Egypt, occupying a quarter of the island. Next, visit the High Dam, one of the most outstanding architectural achievements of the twentieth century. It was constructed to replace the old Aswan dam built in 1902. The 3600-meter-long dam

Itinerary continued...

was constructed to protect Egypt from floods as well as provide irrigation and electricity to its citizens. View the Unfinished Obelisk, made of red granites brought from the quarries of Aswan. Enjoy dinner & overnight onboard.

January 24 – Cairo

Disembark your cruise ship and fly to Cairo. Tour the Citadel of Saladin, built in 1183 AD, and view the Alabaster Mosque of Mohammed Ali. In Old Cairo, visit the Abu Serge Church, built over the traditional site of the house where the Holy Family lived during their stay in Egypt. Dinner and overnight in your Cairo hotel.

January 25 – Return Home or fly to Aqaba for the Petra and Dead Sea Extension

Starting at
\$4,998* from New York

YOUR ALL-INCLUSIVE PRICE INCLUDES:

Basic Tour & Guided Sightseeing
Round-trip International Airfare

Additional baggage & optional fees may apply;
see fine print for details

Fuel Surcharges and Government Taxes
Subject to change

Admin. Fees, Entrance Fees, Hotel Gratuities,
Program Fees, Daily Breakfast & Dinner,
Deluxe Motorcoaches, First-Class Hotels & much more!

*A 3.5% surcharge will be added to all credit card transactions.

Register Early & Save

\$150

Register by
February 14, 2024

\$125

Register by
March 14, 2024

\$100

Register by
April 14, 2024

\$75

Register by
May 14, 2024

\$50

Register by
June 14, 2024

\$25

Register by
July 14, 2024

Purchase Domestic Airfare through EO

Includes Fuel Surcharges, Transfers and Taxes (subject to change)

To fly from a city near you, call 1-800-247-0017, X590
or register online at www.eo.travel

EXTENSION



Wonders of Petra & the Dead Sea

January 25 - 29, 2025

Starting at **\$1,298***

January 25 – Fly to Aqaba

This morning, fly from Cairo to Aqaba. Visit Wadi Rum before continuing to Petra for overnight.

January 26 – Petra

Explore Petra, the ancient Nabatean city carved into the sandstone cliffs. Travel through the Siq, the narrow passage that ends at the famed Treasury. Moses' brother Aaron is said to be buried on Jabal Haroun nearby. Overnight in Petra.

January 27 – Mount Nebo

Drive north to visit Mount Nebo, where Moses viewed the Promised Land. Tradition holds that Moses died on the mountain or nearby, but his grave has never been found. Continue to the shores of the Dead Sea, where you can relax and rest before dinner.

January 28 – Free Day

Enjoy a free day at the Dead Sea before your late-night flight back to the United States.

January 29 – Return to the USA

Guests taking an extension may be on a different flight than their group and/or traveling companion.

A minimum of 8 travelers are necessary to operate the extension.

*A 3.5% surcharge will be added to all credit card transactions.



TRAVEL REGISTRATION FORM

Mail to: EO Tours • P.O. Box 6098, Lakeland, FL 33807-6098
863-648-0383 • email: eo@travelwithus.com

Host: Butler Springs Christian Camp ID#: 62057 Tour: EG25

Departure City: Departure Date: 01/14/25 (Z)

First, Middle & Last Name must be submitted as it appears on your passport:

Guest 1: First Name: (Preferred Name)

Middle Name: Last Name: Title:

Street Address: P.O. Box:

City: State: Zip Code:

Phone: Alt. Phone:

Email: Send me emails about my trip/EO promos

Birth Date: / / State of Birth: Sex: Male Female

Emergency Contact: Relationship:

Phone: Alt. Phone:

Dietary Restrictions:

How did you learn about this tour?

Tour Selection: Basic Program Only Add Petra Ext.

Guest 2: First Name: (Preferred Name)

Middle Name: Last Name: Title:

Street Address: P.O. Box:

City: State: Zip Code:

Phone: Alt. Phone:

Email: Send me emails about my trip/EO promos

Birth Date: / / State of Birth: Sex: Male Female

Emergency Contact: Relationship:

Phone: Alt. Phone:

Dietary Restrictions:

How did you learn about this tour?

Tour Selection: Basic Program Only Add Petra Ext.

Roommate(s):

If No Roommate: Try to Match Me Single Room (availability limited)

Table with 2 columns: Important Information Regarding Travel Protection Plan and Guest 1/2 options (Accept/Decline).

DEPOSIT PER PERSON REQUIRED

Payment: \$ Check # (Payable to Educational Opportunities Tours)

To Register via Credit Card, you must go to www.EO.travel

By signing below, I/We certify that I have read the "Fine Print," understand its content, and agree to its terms including but not limited to the potential for price increases that may apply before payment in full has been received as set forth in the "Fine Print" and potential price increases after payment in full has been received due to government imposed taxes and fees.

Guest 1 Signature:

Guest 2 Signature:

Tour: EG25 Date: 011425 Code: Z ID: 62057 v.002 09/27/23

Travel Protection Plan - Premium Rates

For a full description of the plan, go to: www.tripmate.com/wp427E

Table with 8 columns: Trip Cost, Plan Cost, Trip Cost, Plan Cost, Trip Cost, Plan Cost, Trip Cost, Plan Cost. Lists various trip cost ranges and corresponding plan costs.

Table with 2 columns: Schedule of Coverages and Maximum Benefit. Lists various coverage types and their maximum benefits.

Part A - Travel Arrangement Benefits are provided by Educational Opportunities Tours. Part B - Travel Protection Benefits are provided by United States Fire Insurance Co.

Conditions and Limitations

This is a brief description of the plan available for all Travel Protection sales for Trips departing January 1, 2013 and after. Certain exclusions and limitations apply and are detailed in the Certificate of Coverage. For example, coverage does not apply to any Sickness or condition of you, a Traveling Companion or a Family Member traveling with you that existed during the 60 days prior to the effective date of the coverages (The Pre-Existing Condition Exclusion is waived if payment for this plan is received by Educational Opportunities Tours, Inc. at or before the final payment due date for Your Trip or 105 days before departure date, whichever occurs first), suicide, normal pregnancy, war or any act of war. Other Covered Reasons, as defined, includes the following events or their consequences: Cancellation or Interruption of your Trip due to: Inclement Weather, unannounced Strike, mechanical breakdown that causes complete cessation of services of Your Common Carrier for at least 12 consecutive hours; a documented traffic accident while en route to departure; being hijacked or quarantined; jury duty; destruction of your home or destination by fire, flood, burglary or natural disaster; being called to the emergency service of government to provide aid or relief in the event of a natural disaster; a documented theft of passports or visas; a transfer of employment of 250 miles or more; or Revocation of military leave. For further information ask for the Certificate of Coverage which fully details the coverages, provisions, limitations and exclusions of the plan offered and is available to you, upon request, at any time prior to your purchase of the plan. The Travel Protection Plan is only available for citizens or residents of the United States of America. This plan is underwritten by: United States Fire Insurance Company, Eatontown, NJ. Benefits are administered by: Trip Mate, Inc., 9225 Ward Parkway, Suite 200, Kansas City, MO, 64114, 1-800-898-7292 (in CA, dba Trip Mate Insurance Agency).

PROGRAM CONDITIONS

INCLUDED IN PRICE: Round-trip international airfare • Deluxe motorcoaches • 1st class hotels • Guided sightseeing • Entrance fees to sites visited (as listed in itinerary) • Breakfast & dinner daily • Hotel gratuities • Program fees • Administrative Fee • 3-Night River Cruise • Fuel surcharges \$450 • Government Taxes \$98 (Increases in government tax and fees are subject to change)
NOT INCLUDED IN PRICE: Optional Travel Protection Program (see premium schedule) • Extensions and optional sightseeing as listed in the brochure • Miscellaneous fees such as individual transfers; passports, laundry, lunches, beverages at meals & baggage fees • Voluntary "Love Offering" for guide and driver • \$100 Document fee for Non-US/Canadian residents • Visa for non-US citizens • Required Vaccinations, Required medical testing before, during, and/or after travel
ACCOMMODATIONS: Price is per person based on double occupancy. When available, single rooms are often smaller than doubles. While EOT will try to match roommates, EOT cannot guarantee a roommate will be available. Roommates may be assigned as late as 30 days prior to departure and, if one is not available or you request a single room, the following charges apply: \$998 during the basic tour; \$398 for Petra.
SAVINGS: Early registration discounts or other promotions are deducted from the balance of your bill. Hosts/Co-hosts are not eligible.
PAYMENT INFORMATION: A 3.5% Surcharge will be added to all credit card transactions.
PAYMENT SCHEDULE:

Table with 2 columns: Payment Amount and Payment Due Dates & Notes. Details payment amounts and due dates for registrations received at different times.

REGISTRATIONS RECEIVED AFTER OCTOBER 1, 2024: We welcome registrations after 10/01/24. Registrations received between 10/02/24 - 10/16/24 will incur a \$100 per person fee. Registrations received between 10/17/24 - 10/31/24 will incur a \$200 per person fee. Registrations received between 11/01/24 - 11/15/24 will incur a \$400 per person fee. Registrations received on 11/16/24 or later will incur an additional fee based on air availability. Additional fees will be advised upon registration.

CANCELLATION FEES: 100% of Cancellation Fees are covered by the optional Travel Protection Program provided premium has been paid and reason for cancellation is coverable. Those who do not take travel protection should be aware of the following per-person cancellation penalties: From day of registration to 105 days prior to departure, you will be charged the \$100 non-refundable cancellation fee plus any airline fees. Additionally, thereafter, you will be charged any airline penalties and a single room supplement if your cancellation forces your roommate into a single plus the following per-person charges: 104-60 days = \$400; 59-45 days = \$600; 44-31 days = 40% of total cost; 30 days to day of departure = 100% of total cost. Submit cancellation in writing. On or after day of departure, there will be no refund for any services not used.

STATEMENTS OF RESPONSIBILITY: EOT does not accept responsibility for losses or additional expenses due to delay or changes in air schedules, hotel overbookings, other hotel related problems or causes, and/or travel supplier cancellations or postponements. Travel suppliers include all tour operators, cruise lines, airlines, hotels, bus companies, entertainment venues, and any other travel supplier used to operate the tour. All such losses or expenses will be the responsibility of the passenger. EOT reserves the right to make adjustments to the itinerary as deemed desirable by EOT, and EOT reserves the right to cancel any tour prior to departure. If a tour is canceled beyond the control of EOT, EOT will provide a refund or a future travel credit to be used two years from the date of issuance for the value of all funds paid by the passenger less nonrefundable travel supplier prepaid deposits, travel supplier change fees, nonrefundable travel protection premiums, and a \$150 administration fee.

FIT TO TRAVEL STATEMENT: Passengers registering for the tour accept the responsibility for being in good health and able to walk and travel on the tour. Because many of the sites are not accessible to the physically challenged and space limitations on tour buses, wheelchairs and scooters cannot be accommodated. Those needing oxygen or other ambulatory assistance will find the tour extremely limiting in their experiences. Persons using C-pap machines requiring distilled water will need to inform us ahead of time, so we can work with local operators to prepare as it is not always available. EOT reserves the right to refuse or revoke travel to anyone who is, in the sole judgment of EOT, incapable of group travel without causing undue demands upon the staff or other tour participants. Accessible rooms/cabins are limited and subject to confirmation after receiving the passenger's written request. If you have questions, please see eo.travel/fit-to-travel-statement or contact Educational Opportunities Tours Inc. for more details.

PASSPORT INFORMATION: Passport information must be submitted to our office no later than 10/01/24. Failure to provide your passport information to our office by this date may result in change fees or denial of travel. Discrepancies in information may result in change fees, delays in receiving travel documents for your trip, or denial of travel. Any fees incurred due to discrepancies are the responsibility of the passenger.

PRICE INCREASES: All prices quoted in this brochure are subject to change prior to payment in full due to currency fluctuations, fuel surcharge increases, government taxes and fees increases or unforeseen circumstances. In addition, you may be subject to a price increase after payment in full has been received due to potential government imposed taxes and fees.

AIRLINE ROUTES AND TICKETS: In order to keep prices low, EOT does not guarantee the most direct routing to your final destination. Once issued, airline tickets cannot be changed or refunded. Air transportation to your destination will be economy class on IATA and ARC carriers utilizing APEX or SUPER APEX non-refundable, non-amendable tickets for groups of 10 or more flying together on entire itinerary. If you choose to depart from a different city than your group or traveling companion, or deviate your flight and/or trip plans, and/or you are taking a pre or post tour, you may fly on a different scheduled flight(s) than the rest of your group. If you make your own air arrangements, you are responsible for booking all needed flights for your travel unless specified otherwise. Contact guest services for further details.

FLIGHT TIMES AND SEATING: All flights are subject to change by the airlines without advance notice. EOT is not responsible for such changes or delays and does not reimburse expenses resulting from such delays. If you are making your own flight arrangements to the departure city, you recommend you purchase a ticket that can be exchanged without large penalties. There is no advance seat selection for groups on most airlines. Early check-in is necessary to secure seats with travel companions and those with special needs. Due to security measures taken at airports, it is advisable to arrive at the airport three hours prior to departure time. Seating is solely under the control of the airlines.

ADDITIONAL AIRLINE FEES: You will likely incur additional airline checked baggage fees that are not included in the price of the tour. These fees vary by airline and are at the airline's discretion on each segment of the flight itinerary. Additionally, you may incur optional fees (food, excess baggage, overweight baggage, items of personal nature, etc.) as well. For more information, visit eo.travel/travel-info/airline-fees.

ON OWN DEVIATIONS: On Own Deviations from the standard tour program must be submitted in writing and are subject to additional airline fees, if applicable. Transfers for passengers who deviate are not included.

ITINERARY CHANGES: Every effort has been made to ensure the accuracy of this brochure. While EOT will make every effort to ensure you will see all sites listed in this brochure, the availability of sites, order of sites and/or days and number of days may be altered to accommodate changes in airline, hotel schedules, and local conditions. No changes to the itinerary are effective unless approved in writing and signed by an authorized officer of the tour operator. Except as stated herein, no other person is authorized to cancel, modify or vary the tour arrangements or to make any representation of warranty concerning the tour.

Due to airline schedules, some participants may receive one or two extra leisure days at a nominal per day charge and some extensions may not be available on all departure dates. If itinerary changes necessitate extra overnights, you will be charged \$125 per night; single rooms \$175 per night. Meals for extra nights are not included.

VALIDITY DATE: This brochure is valid until 11/27/23. If validity date has passed, current brochures may be found at www.eo.travel. Registrations will still be accepted after the validity date.

RELEASE INFORMATION: Payment of deposit indicates permission for EOT or its agents to record the registrant's participation and appearance on video tape, audio tape, film, photograph, or any other medium and to use the registrant's name, likeness, voice, comments, submitted documentation, writing papers, and/or biographical material without restrictions or limitation for any advertising, marketing, publicity, educational or promotional purpose which EOT or its agents deem appropriate, unless the registrant or guardian otherwise notifies EOT in writing prior to departure. Enrollment in, payment of deposit and/or acceptance of final documents, vouchers, or tickets shall be deemed to be consent to the Passenger Agreement and Program Conditions of the brochure. Prices are based on tariffs in effect as of January 1 of the previous year and are subject to adjustment without notice in the event of any change or currency fluctuation. Except where otherwise stated, EOT acts only as agent for the relevant supplier in securing hotels, transportation and other travel services and in no event shall EOT be liable for failure by any such supplier to render any transportation, lodging or other travel service to be provided on the tour. The passenger agrees that EOT assumes no liability for injury, death, damage, loss, theft, accident, delay, any lost or damaged luggage, or irregularity which may occur by reason of any negligence or willful act or omission of any suppliers or service. EOT does not own or operate any of the suppliers of services to your tour. Similarly without limiting the foregoing, passenger agrees to hold EOT harmless for any defect in any vehicle, plane, boat, bus, car, van or other vehicle, act of war or insurrection, terrorist activity, revolt or other civil uprising, military action, strikes or labor unrest or any Act of God or act of any third party. Florida law will be applicable to any dispute which arises out of or concerns this brochure or your tour. Any and all litigation must be brought only in and for courts in Polk County, Florida to the exclusion of litigation anywhere else in the world.

Educational Opportunities Tours is the tour operator and is solely responsible for the travel program. Educational Opportunities Tours is registered with the State of Florida as a Seller of Travel. Registration No. ST24130. CST2027682-40.